



# Numbers and Lessons

Collected from 2025 Incident Reports

## Fatalities

12

- 6 Medical
- 2 Assault
- 2 Falls
- 1 Hit by Tree
- 1 Driving



## Incident Numbers:

### Entrapment Incidents

5

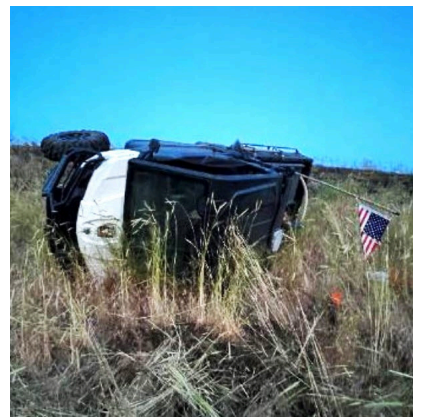
- 2 Initial Attack
- 2 Extended Attack
- 1 Prescribed Fire



### UTV Incidents

7

- 5 Rollovers
- 2 Burn Damage



### Chainsaw Cut Incidents

11

- 7 to Hand
- 2 to Leg
- 1 to Foot
- 1 to Shoulder



### Driving Related Incidents

18

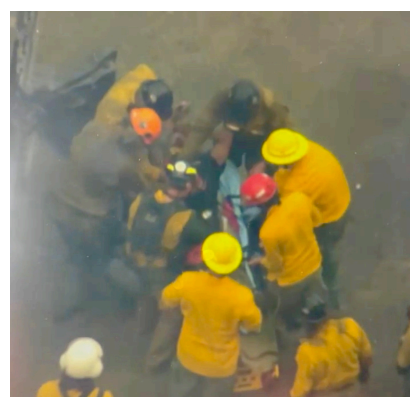
- 8 Rollovers
- 7 Crashes
- 2 Backing
- 1 Broken Wheel Studs



### Hit by Tree Incidents

25

- 15 Not Tree Felling
- 8 Tree Felling
- 2 Unknown

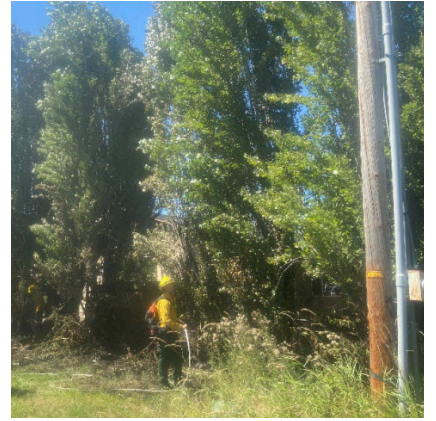


# Lessons

## Pause Around Electricity

A firefighter experienced an electrical shock while checking for heat inside a hollow, smoking tree that was in contact with overhead powerlines.

[Three Creeks Fire Electrical Shock](#)



## Wear Eye Protection



A UTV operator received burns on their face while trying to reposition the UTV away from the head of the fire. Protective safety glasses worn by the burned firefighter prevented their eyes from receiving burn injuries.

[West Beach Prescribed Fire Entrapment](#)

## Insert Batteries Carefully

On one side the batteries were placed opposite of their required positioning. This caused the batteries to overheat and leak, melting parts of the internal clamshell and expanding the batteries on the other side.



[Rock Fire Radio Battery Overheat](#)

## Be Cautious of Surface Pipes



A surface pipe exposed to the high temperatures of the passing wildfire resulted in a natural gas leak and subsequent gas line fire. If you see pipes above ground near a fire, move away and close off the area. Notify IC and request assistance from oil and gas personnel.

[Fire 227 Gas Pipeline Rupture](#)

## Use the Chain Brake

The sawyer reached forward to move a limb. His right hand was still on the trigger handle. He inadvertently activated the throttle and his left hand contacted the chain while it was running at cutting speed. The sawyer noted it would have been better to work with a swamper and lock the chain brake before clearing the debris.



[South Rim Fire Chainsaw Cut](#)